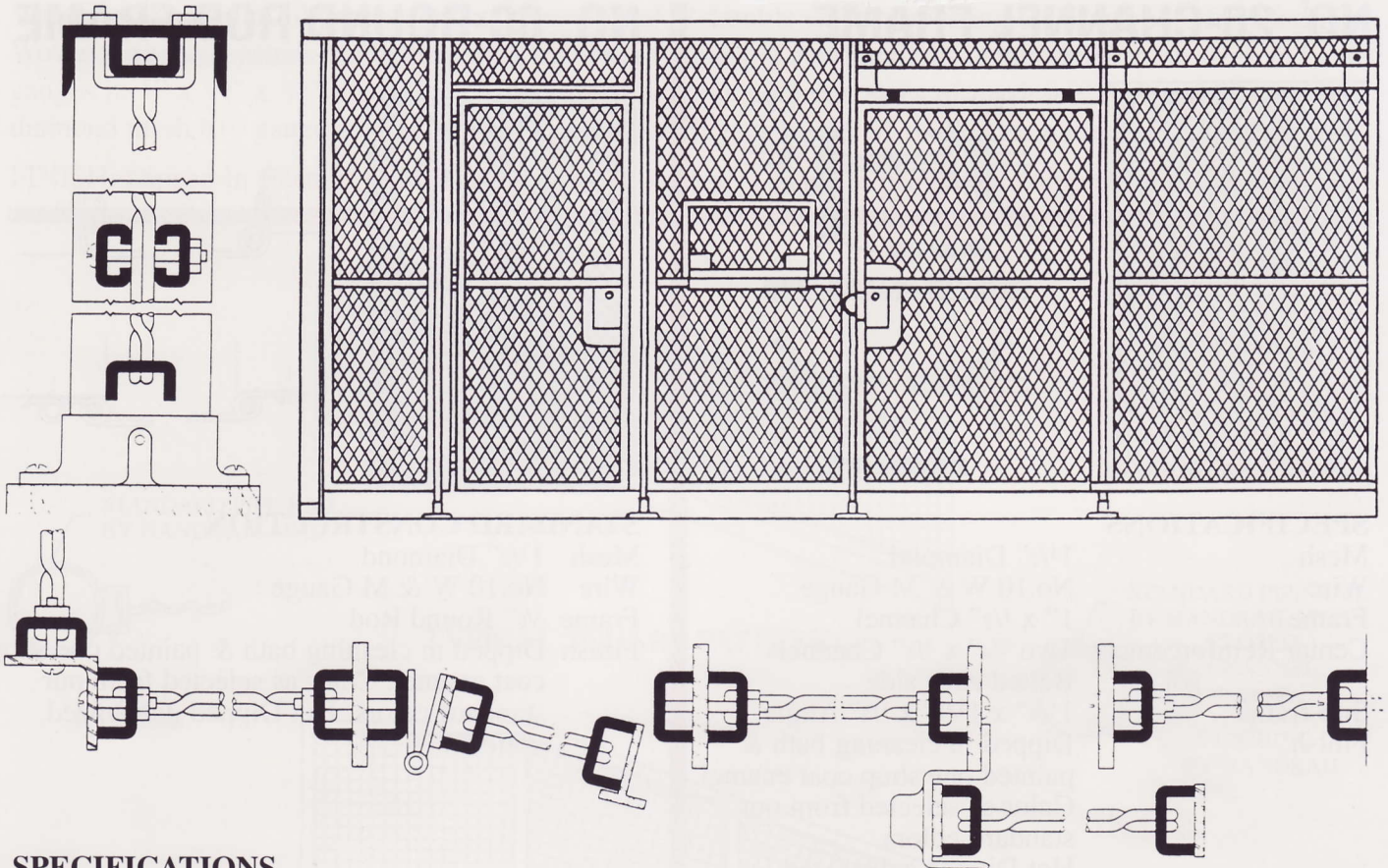


# MILLER WIRE WORKS, INC.

## No. 300M-Heavy Duty Partition



### SPECIFICATIONS

Mesh	2" Diamond-Intermediate Crimped
Wire	No. 6 W & M Gauge
Frame	1 1/2" x 3/4" Channel with 1/4" Bolts.
Center Reinforcement	Two 1 1/4" x 5/8" CR Channels Bolted Each Side of Wire
Corner Post	1 3/4" x 1 3/4" x 1/8" Angle
Intermediate Post	2 1/2" x 3/8" Flat Bar
Top Reinforcement	3" Channel fastened with 1/4" "U" Bolts
Floor Sockets	2 1/2" x 3/8"
Hardware	Mortise Type Lock operated by key outside, recess knob inside.

**FINISH:** Dipped in cleaning bath & painted one shop coat enamel. Color as selected from our standard colors. Hot dipped galvanized optional.

**BRACING:** Free Standing Partitions to Have 3" Channel Line Post Approx. 15'-0" to 20'-0" on Centers with 8" x 16" x 1/4" Base Plates.