

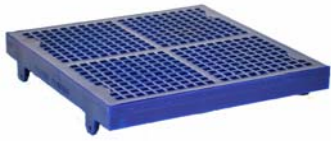


MILLER WIRE WORKS, INC.

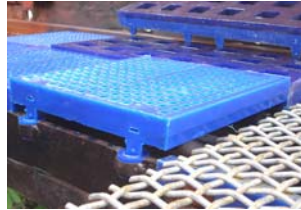
URETHANE SCREENS

Our Own Miller Locking (ML) Systems

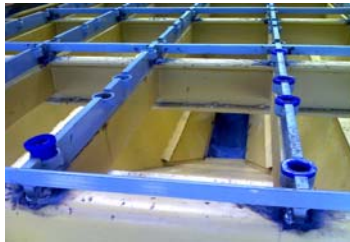
New ML7 MAX (Patented)



Maximum Open Area!
No Pins! Dual Durometer!



12"x 12", 12"x 24"



Modular Sub-decking



ML7 Wire Modules

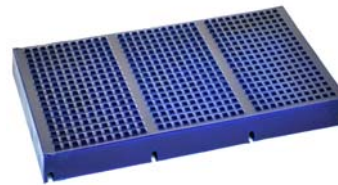
ML4 - Modular with **NO Deck Modification!**



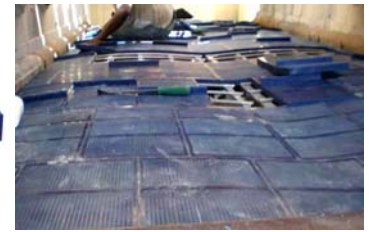
Best of all worlds



Install sub-deck like wire

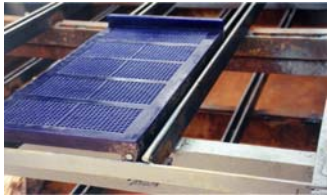


Snap-on Modules



Crowned or Flat Decks

ML3 System



Great for wet decks



Quickest Module Replacement

UreWire Screens & UreFlex Screens



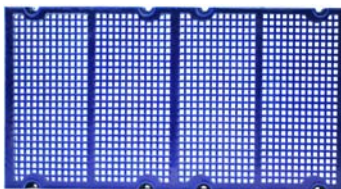
UreWire screens have embedded wire support
UreFlex screens have more flexibility for anti-plugging

Retrofitting Competitive Locking Systems

CL3 Polydeck



Max 12" x 12"



Max 12" x 24"

TL2 Tema Isenmann



Centers & Sides 2', 4' or 5' Long



TL2 with wire

DL Durex



CL7 Tabor



CL4 Tyler & HR



CL5 Irathane/CL6 Linatex

Rubber Screens



Max Flex



Bolt-on Scalping

7429 Georgia Road
Birmingham, Alabama 35212

Phone: 205-592-0341 800-783-0341 Fax: 205-599-2172
screen@millerwireworks.com www.millerwireworks.com

Manufacturing polyurethane screens since 1982!